



Agricultural Machinery Sample

01. Solutions for Agriculture

02. Product performance
optimization

03. Integrated unit product model &
installation size

04. Seal ring optimization

05. Grease & oil volume
optimization

06. Product model and mounting size

CONTENTS

Solutions for Agriculture

We understand the needs of modern farmers. We went out into their fields and talked about their challenges and concerns. We work closely with equipment manufacturers to develop solutions to practical problems and then test them in our LABS and working farms

End User Benefits

- The cost per hectare is lower
- Reduce maintenance and extend the service life of equipment
- Reduce your use of fuel and grease
- Greater degree of automation and precision
- Equipment working capability improves safety and comfort



Product performance optimization

The engineers of NEOVERT, combined with years of experience, put forward effective solutions for various severe working conditions, greatly improving product quality reliability, working efficiency and reducing maintenance costs.

Double row angular contact design

The double row angular contact design with high strength and eccentric load uses finite element simulation to optimize the structure, reduce the material utilization rate, make the product structure more compact, realize the light weight of the product, and control the concentrated stress within the allowable range to improve the reliability of the product.

Unique local heat treatment

The unique local heat treatment process makes the bearing have higher strength and improves the reliability of the product.

Integrated unit bearing design

Adopt integrated unit bearing design, integral maintenance-free design, no need to add lubrication in the later stage, greatly reducing maintenance costs

Quick thread connection

Fast threaded connection, 70% shorter installation time than traditional structure

Design of Multi-lip Labyrinth Seal

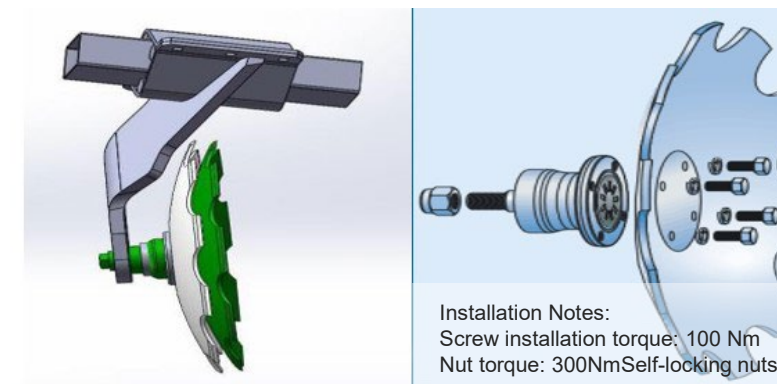
The design of multi-lip labyrinth seal ensures the excellent sealing performance of bearings

Special exterior and closure treatments

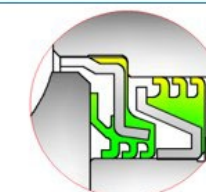
After the high corrosion resistant trivalent chromium blue zinc passivator is used on the external surface, and then uses 904 high efficiency anticorrosive sealing agent to do sealing treatment, so that the surface of the galvanized layer to form a protective film, smoke test: 100 hours.

Lower rotational torque

Lower rotational torque, reducing energy consumption by 40%



The outer surface of electroplating is effectively dustproof and corroded, and the internal grease is as new after mud test for 120 hours

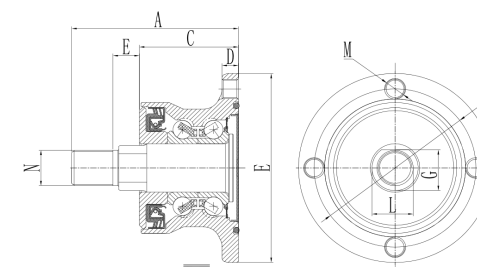


The multi-lip seal design can effectively prevent the entry of sand, gravel and mud, and maintain the purity of the internal grease.

Integrated Unit product model and installation Size (1)

unit : mm

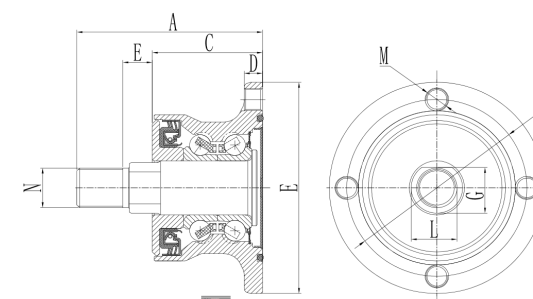
Model	A	E	C	D	F	K	M	N	G	L	Cr	Cor
HUB-30-4M-98-FLTZ	102	14.6	60	10	117	98	4-M12X1.25	M22X1.5	25.5	28	46.8KN	36.6KN
HUB-30-5M-98-FLTZ	102	14.6	60	10	117	98	5-M12X1.25	M22X1.5	25.5	28	46.8KN	36.6KN
HUB-30-6M-98-FLTZ	102	14.6	60	10	117	98	6-M12X1.25	M22X1.5	25.5	28	46.8KN	36.6KN
HUB-30-6M-115-FLTZ	102	14.6	60	10	142	115	6-M12X1.25	M22X1.5	25.5	28	46.8KN	36.6KN
HUB-30-5M-98-FLTZ-SPC	102	13.2	60	10	117	98	5-M12X1.25	M22X1.5	25.5	28	46.8KN	36.6KN
HUB-40-4-133.35-FLTZ	113.7	12.7	67	14	168	133.35	5- ϕ 13.5	M22X1.5	25.5	28	50.75KN	45.5KN



Integrated Unit product model and installation Size (2)

unit : mm

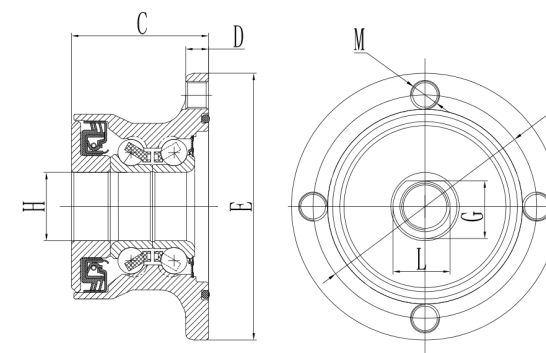
Model	A	E	C	D	F	K	M	N	G	L	Cr	Cor
HUB-50-8-131-FLTZ	162	17	94	18	160	131	8- \varnothing 11.5	M36	36	49	123KN	180KN
HUB-42-5M-128-FLTZ	134.6	23	69.6	16	160	128	5-M14	M27X2	26.5	30	62.9KN	54.4KN
HUB-30-4M-98-FLTZ-SPC	104	15	60	10	117	98	4-M12X1.25	M24X2	27.5	30	46.8KN	36.6KN
HUB-30-6M-98-FLTZ-SPC	106	15	60	10	117	98	6-M12X1.25	M24X2	27.5	30	46.8KN	36.6KN
HUB-30-4M-98-FLTZ-SPC-A-B	102	14.6	60	10	117	98	4-M12X1.25	M22X1.5	25.5	28	46.8KN	36.6KN
HUB-40-4-133.35-FLTZ-SPC-B	102	14.6	60	10	117	98	4-M12X1.25	M22X1.5	25.5	28	46.8KN	36.6KN



Integrated Unit product model and installation Size (3)

unit : mm

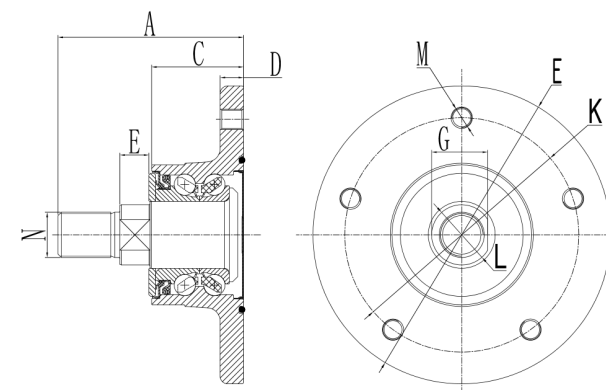
Model	E	C	D	E	K	M	Cr	Cor
HUB-30-4M-98-FLTZ-WZ	117	59.5	10	117	98	4-M12X1.25	46.8KN	36.58KN
HUB-30-4M-98-FLTZ-WZ—WDQ	117	59.5	10	117	98	4-M12X1.25	46.8KN	36.58KN



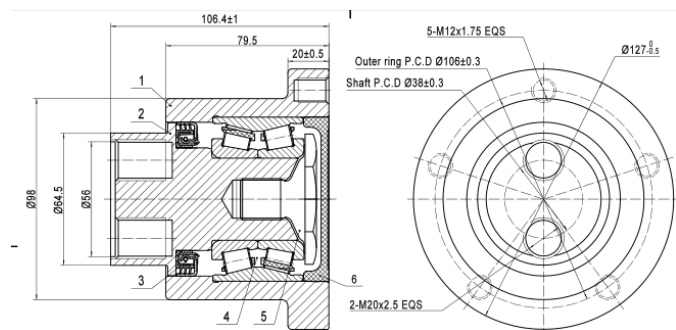
Integrated Unit product model and installation Size (4)

unit : mm

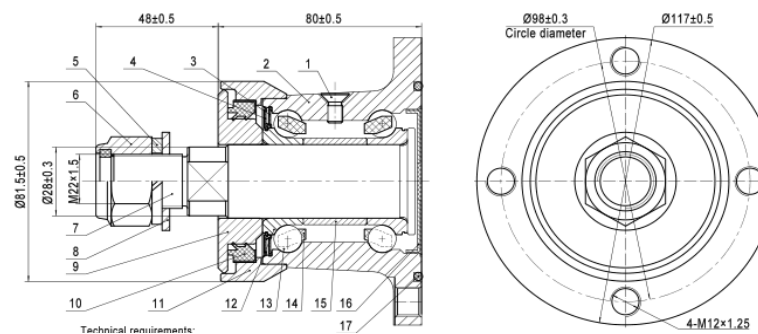
Model	A	E	C	D	F	K	M	N	G	L	Cr	Cor
HUB-20-5-80-SLTZ	73	11	38	7	100	89	4-Ø8.5	M16X2	18.5	20	20.2KN	13.1KN
HUB-35-6M-150-SLTZ	116	20	61	10.5	178	150	6-M12X1.25	M24X2	28	30	48.6KN	42KN
HUB-35-5M-112-SLTZ	98.5	18	52.5	10.5	140	112	5-M12X1.25	M24X2	28	30	48,6KN	42KN
HUB-30-4M-98-SLTZ-SPC	88	17	45	10	117	98	4-M12X1.25	M22X1.5	25.5	28	38.5KN	333.3KN
HUB-40-5M-140-SLTZ	111	20.5	55	14	178	140	5-M12X1.25	M27X2	33.5	36	57.6KN	49KN



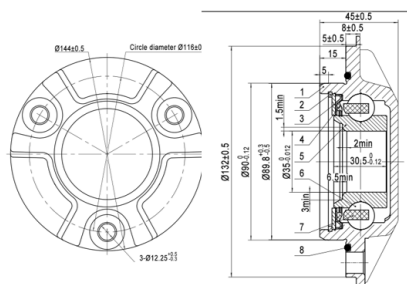
Integrated Unit product model and installation Size (5)



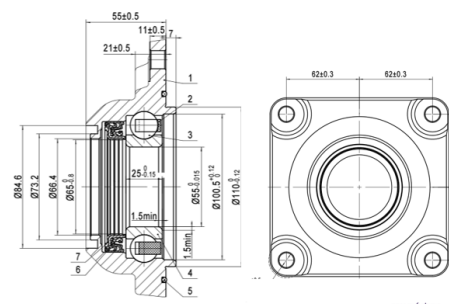
Model :HUB-40-5M-106-FLTZ



Model :HUB-30-4M-98-ZHMF-SPC



Model :PM55400302

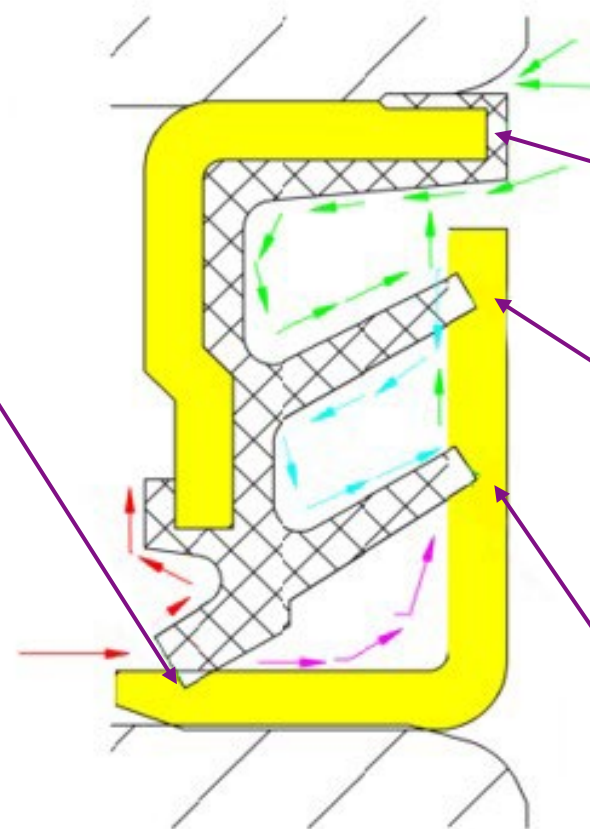


Model :M55400310

Optimization of bearing seals of the first-generation Land preparation machine

The main lip of the sealing ring is used to prevent mud, dust and other impurities from entering the bearing, and also has the effect of preventing the leakage of grease inside the bearing

-  **Slurry flow direction**
-  **Grease flow direction**
-  **Small amount of Slurry**
-  **Small amount of grease**



The outer diameter of the sealing bone is covered with rubber, which can prevent dust and mud from entering the bearing from the sealing ring bone and the mating surface of the outer ring.

The sealing ring side lip(1) prevents mud, dust and other impurities from entering the bearing from the outside

The sealing ring side lip(2) prevents a small amount of mud, dust and other impurities from entering the side lip one, thus entering the bearing, resulting in a small amount of grease entering the main lip and flowing out, so that the internal grease is reduced.

Selection of grease and optimization of grease injection amount

Choosing RONIX MP Grease: Features and Benefits

RONIX MP greases are one of the high-quality products in the RONIX range, known worldwide for their stability under harsh operating conditions. RONIX MP greases are formulated with a proprietary lithium complex soap thickener and high quality paraffinic mineral oil base oils, together with a comprehensive and balanced functional additive system to provide reliable quality and lubrication. Like other Mobil series greases, RONIX MP products are of the highest quality and consistency. RONIX MP offers many performance features

01
Comprehensive and balanced grease can be suitable for many industrial and automotive multi-purpose lubrication applications

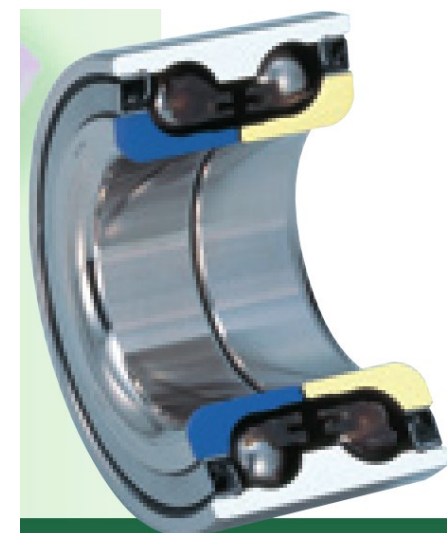
02
During its long service life, it can maintain excellent resistance to high temperature degradation, even in harsh operating environments

03
Excellent extreme pressure and wear resistance to protect and extend the life of bearings and other lubricating mechanisms, including impact load applications

04
Excellent high temperature and low temperature performance

05
Good water resistance to ensure reliable lubrication in unfavorable environments where water is present

06
The recommended operating temperature range is -40 °C to +160° C



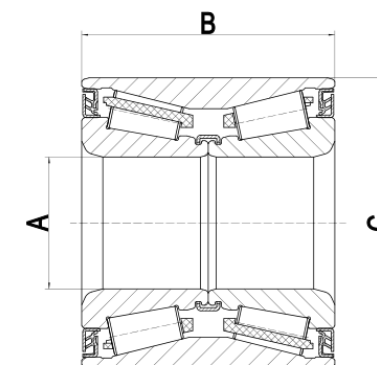
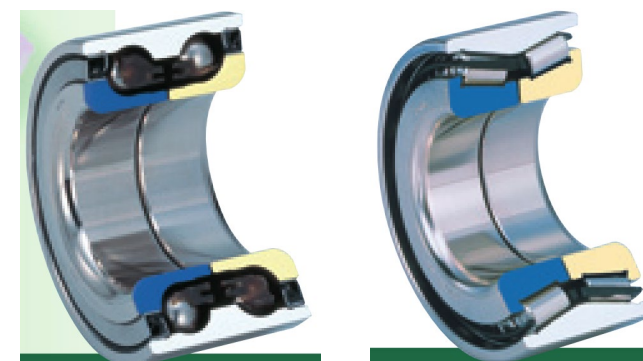
Selection of grease injection amount:

According to the low speed of the product, the internal temperature of the bearing is not high when the product is used, and the internal pressure of the bearing is low, our company chooses the bearing space of 60%-70% grease to fully lubricize the bearing interior.

First generation product model and installation dimension

unit : mm

Model	Type	A	B	C	Cr	Cor
DAC30600037-ZZ	ball	30	37	60	33.4KN	26.9KN
DU30600037-ZZ	cone	30	37	60	57.1KN	77.1KN
DAC35650035-ZZ	ball	35	35	65	38.7KN	33.4KN
DU35650035-ZZ	cone	35	35	65	71.8KN	99.7KN
DAC35720027	ball	35	27	72	46.3KN	38.6KN
DAC35720034-2RS	ball	35	34	72	28.8KN	24.3KN
DAC30620030-2RS	ball	30	30	62	36.8KN	30.6KN
DU40720037-ZZ	cone	40	37	72	63KN	91.2KN
DAC40720037-ZZ	ball	40	37	72	47.4KN	40.9KN





THANK YOU